

## Your support makes our success possible.

Your membership is the strongest message you can send to show your support for economic growth, advancement and prosperity for our community. Investment in the Partnership helps make our communities stronger, and a more viable place to live and work. All contributions are tax deductible.

Community Champion: \$5,000 or more  
Community Partner: \$2,000-\$4,999  
Development Associate: \$1,000-\$1,999  
Sustaining Member: \$500-\$999  
Contributor: Under \$500

Name: \_\_\_\_\_

Organization: \_\_\_\_\_

Address: \_\_\_\_\_  
\_\_\_\_\_

Phone: \_\_\_\_\_

E-Mail: \_\_\_\_\_

For more information on the Spoon River  
Partnership for Economic Development  
visit [www.cantonillinois.org/economic-  
development/](http://www.cantonillinois.org/economic-development/)



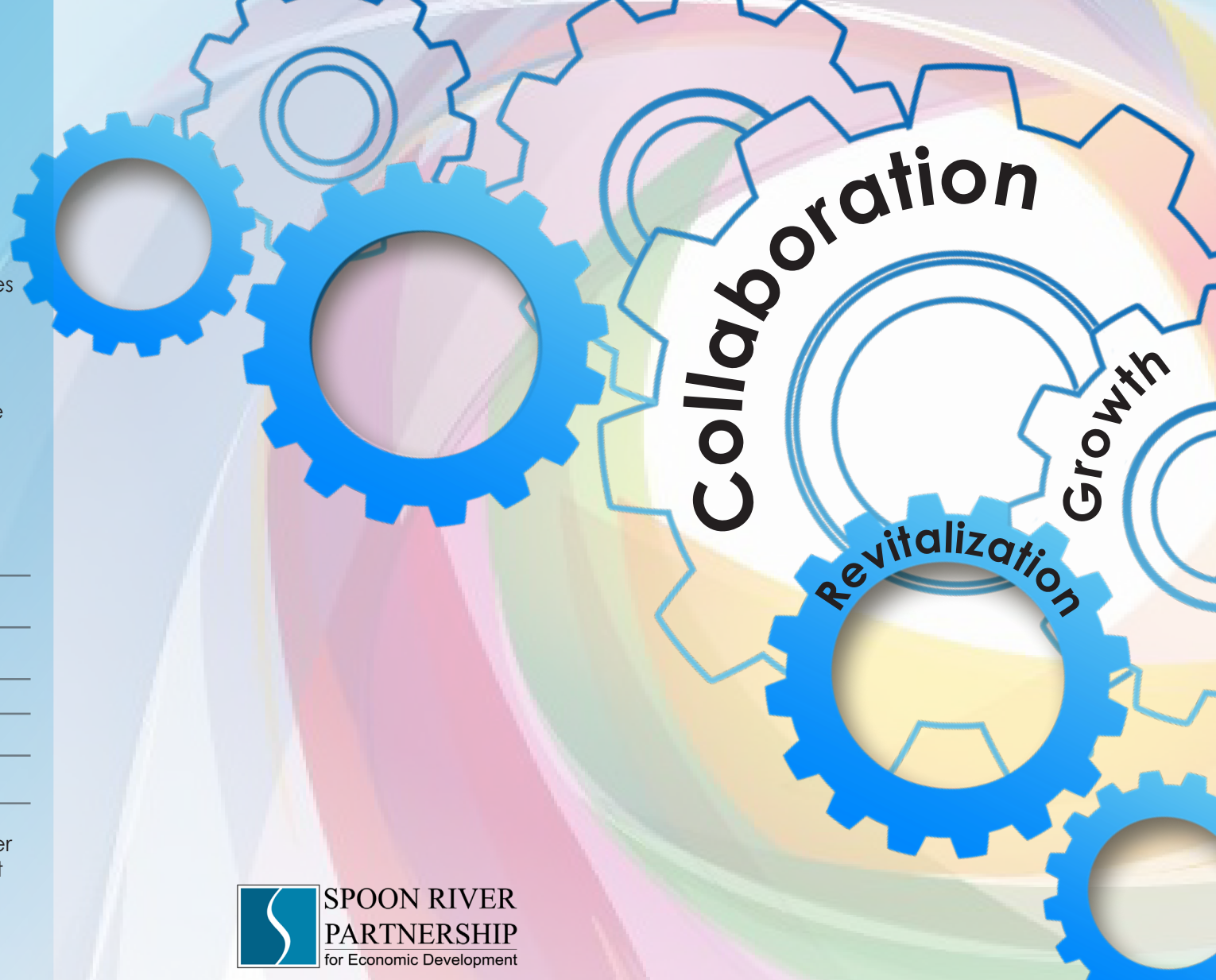
**SPOON RIVER  
PARTNERSHIP**  
for Economic Development

Please make checks payable to:  
Spoon River Partnership for Economic Development  
48 N. Main St.  
Canton, IL 61520

48 N. Main St.  
Canton, IL 61520  
309.647.2677  
309.647.2712 FAX  
[www.cantonillinois.org](http://www.cantonillinois.org)



**SPOON RIVER  
PARTNERSHIP**  
for Economic Development



## Who we are.

The Spoon River Partnership for Economic Development is a 501(c)(3) tax exempt nonprofit organization which is dedicated to serving as a catalyst for economic and community development. We believe that capitalizing on strategic partnerships, business development opportunities and implementing programs and projects that foster growth are key to creating a healthy and vital economy.



## What we believe.

We are dedicated to fostering economic growth in our service area by creating partnerships and cooperation with other community groups, policy makers and private citizens. This commitment includes:

1. Recognizing and responding to current and future needs;
2. Recognizing that effective economic development is a community-wide effort;
3. And utilizing the Partnership's resource responsibly and with integrity.

## What is our focus?

**Marketing the community** for growth, expansion and tourism.

**Attracting business to the community** while assisting small business owners and entrepreneurs.

**Revitalizing community assets** such as the former International Harvester site, the downtown business district, and the Industrial Park.

**Developing and enhancing an educated workforce** through partnerships with local educational institutions.

**Developing tourism** as an additional revenue stream for all of Fulton County. Visit [www.fultoncountyoutdoor.org](http://www.fultoncountyoutdoor.org) to check out our latest efforts.

Small Business  
Assistance

Business  
Expansion

Public & Private  
Partnerships  
for Economic  
Growth

Downtown  
Revitalization

Tourism  
Marketing